



Dunrobin Court

Finchley Road, Hampstead, NW3 6HF

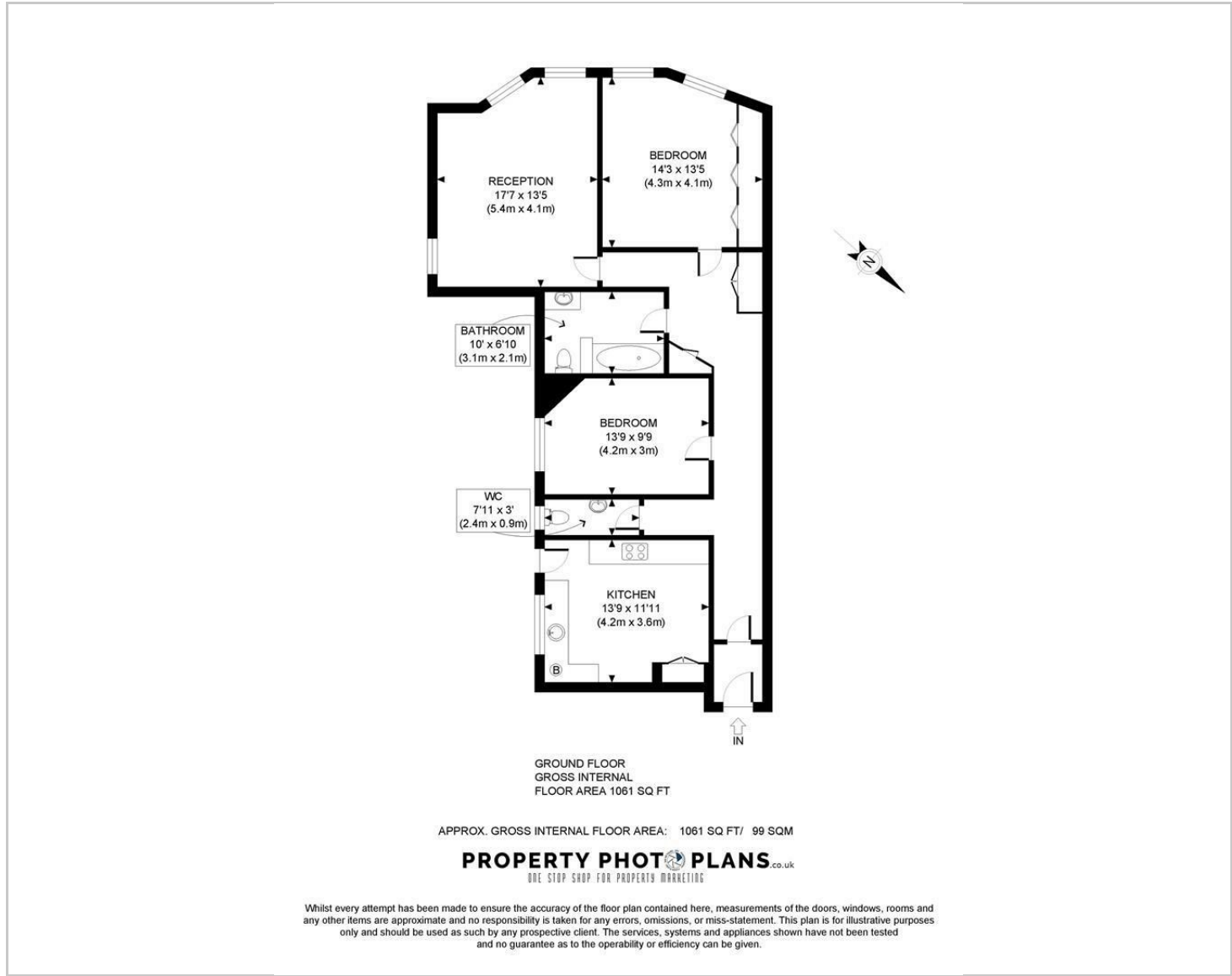
£495 Per Week



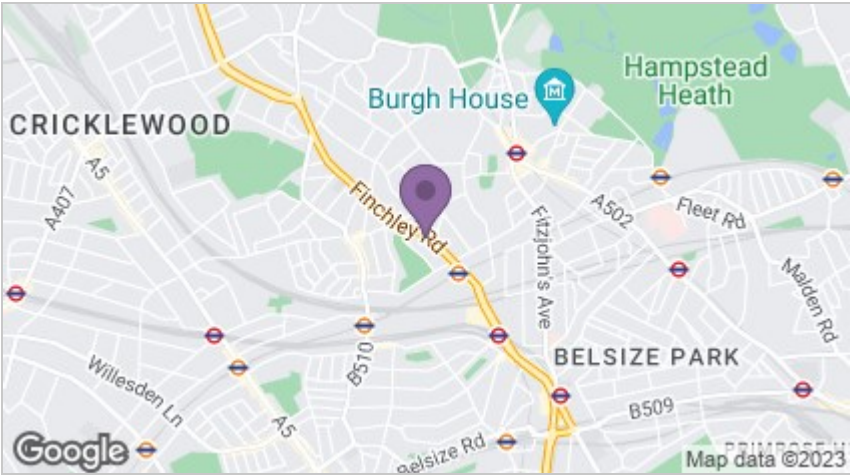
Superb large Two double bedroom raised ground floor flat in this excellent mansion block on the Finchley Road. The property benefits from a large bright reception room, two double bedrooms, eat in fitted kitchen, bathroom and great storage plus access to communal gardens. The property is situated at the back of the building which makes the flat very quiet. Offered on a furnished basis only from the 3rd June 2023 - Council Tax Band - E.



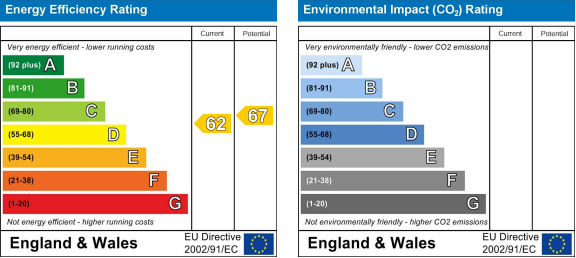
Floor Plans



Area Map



Energy Efficiency Graph



These particulars, whilst believed to be accurate are set out as a general outline only for guidance and do not constitute any part of an offer or contract. Intending purchasers should not rely on them as statements of representation of fact, but must satisfy themselves by inspection or otherwise as to their accuracy. No person in this firms employment has the authority to make or give any representation or warranty in respect of the property.

